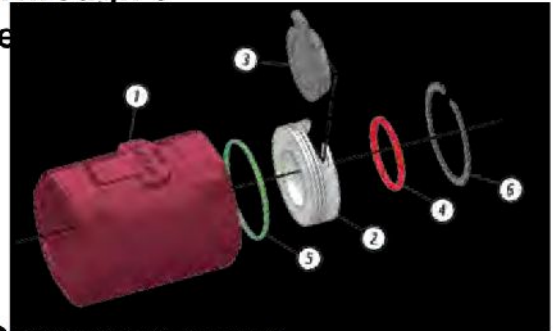


Threaded End Connection

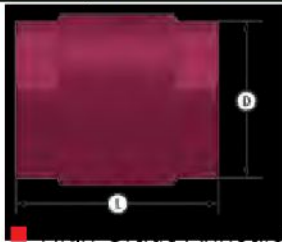


Series C Ductile Iron

- Swing Check Valve
- 750 PSI WP
- 2" Through 3"
- One



ITEM	PART NAME	DESCRIPTION
1	Body	ASTM A395 Class 60-40-18 Fully Annealed
2	Seat	Replaceable Carbon Steel
3	Disc	Replaceable 316 Stainless Steel
4	O-Ring	Seat Seal: Fluorocarbon
5	O-Ring	Body Seal: Buna-N
6	Retaining Ring	316 Stainless Steel



Dimensional Data

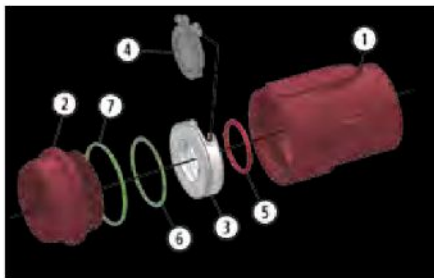
SIZE	CATALOG	PORT	D	L	LBS.
2	2R-C32-SE	1.25	3	3.62	3.3
3	3R-C32-SE	2	4.25	4.50	7.3

Series C Ductile Iron for Better Corrosion Resistance and Greater Yield Strength

- Replaceable Seat Disc Cartridge
- Stainless Steel Disc Standard

- Seal Located in Seat, Thus Protected From Flow
- NACE Standard

- Swing Check Valve
- 1000 PSI WP
- 2"
- Threaded Body Construction

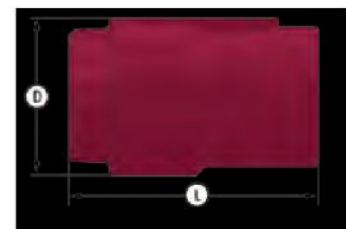


Material Description

ITEM	PART NAME	CARBON STEEL SEAT	STAINLESS STEEL SEAT
		1	Body
2	Adapter	ASTM A395 Class 60-40-18 Fully Annealed	ASTM A395 Class 60-40-18 Fully Annealed
3	Seat	Replaceable Carbon Steel	Replaceable 316 Stainless Steel
4	Disc	Replaceable 316 Stainless Steel	Replaceable 316 Stainless Steel
5	O-Ring	Seat Seal: Fluorocarbon	Seat Seal: Fluorocarbon
6	O-Ring	Assembly Seal: Buna-N	Assembly Seal: Fluorocarbon
7	O-Ring	Body Seal: Buna-N	Body Seal: Fluorocarbon

Dimensional Data

SIZE	CATALOG NUMBER		PORT	D	L	LBS.
	CARBON STEEL SEAT	STAINLESS STEEL SEAT				
2	2R-C42-SE	2R-C42S-SE	1.5	3.37	5.37	6



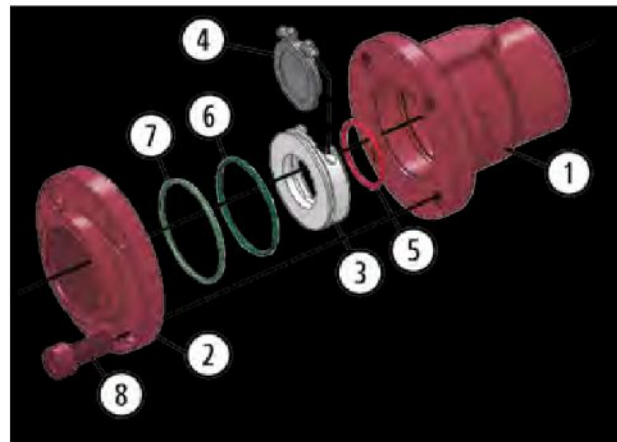
Threaded End Connection

Series C Ductile Iron

- Swing Check Valve
- 2000 PSI WP
- 2" Through 3"
- Bolted Body Construction

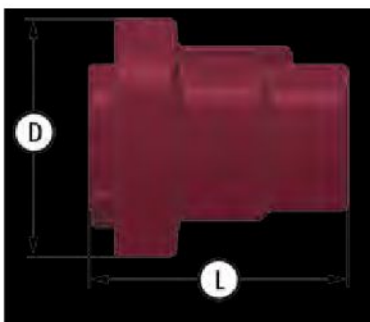


- Bolted Body Protects Against End Adapter Blowout
- High Grade Annealed Ductile Iron for Better Corrosion Resistance and Greater Yield Strength
- Replaceable Seat Disc Cartridge
- Seal Located in Seat, Thus Protected From Flow
- NACE Standard
- 316 Stainless Steel Disc Standard



Material Description

ITEM	PART NAME	CARBON STEEL SEAT	STAINLESS STEEL SEAT
1	Body	ASTM A395 Class 60-40-18 Fully Annealed	ASTM A395 Class 60-40-18 Fully Annealed
2	Adacter	ASTM A395 Class 60-40-18 Fully Annealed	ASTM A395 Class 60-40-18 Fully Annealed
3	Seat	Replaceable AISI 1018 Carbon Steel	Replaceable 316 Stainless Steel
4	Disc	Replaceable 316 Stainless Steel	Replaceable 316 Stainless Steel
5	O-Ring	Body Seal: Buna-N	Body Seal: Fluorocarbon
6	O-Ring	Assembly Seal: Buna-N	Assembly Seal: Fluorocarbon
7	O-Ring	Seat Seal: Fluorocarbon	Seat Seal: Fluorocarbon
8	Bolts	ASTM A193 B7M	ASTM A193 B7M



Dimensional Data

SIZE	CATALOG NUMBER		PORT	D	L	LBS.
	CARBON STEEL SEAT	STAINLESS STEEL SEAT				
2	2R-C92-SE	2R-C92S-SE	1.5	4.87	5.50	10
3	3R-C92-SE	3R-C92S-SE	2	6.75	7.25	24.3