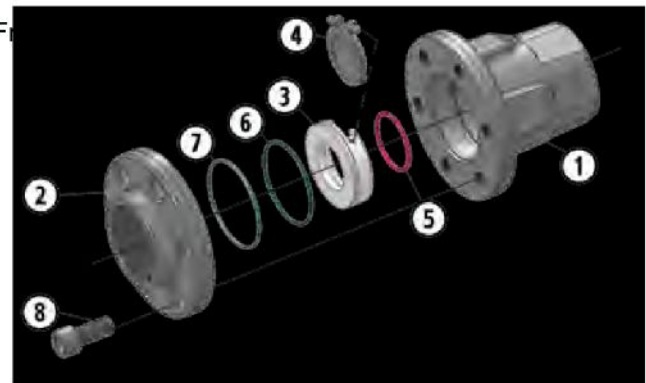


Threaded End Connection

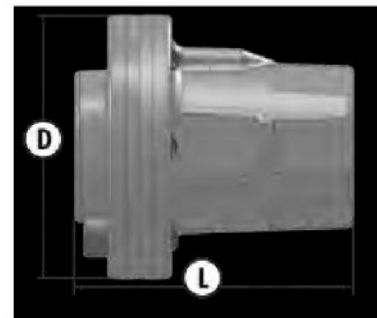
Series C Carbon Steel

- Swing Check Valve
- 3000 PSI WP
- 2"
- Bolted Body Construction
- Bolted Body Protects Against End Adapter Blowout
- Replaceable Seat Disc Cartridge
- Seal Located in Seat, Thus Protected From Process
- NACE Standard
- 316 Stainless Steel Disc Standard



Material Description

ITEM	PART NAME	CARBON STEEL SEAT	STAINLESS STEEL SEAT
1	Body	ASTM A216 WCB/A105	ASTM A216 WCB/A105
2	Adapter	ASTM A216 WCB/A105	ASTM A216 WCB/A105
3	Seat	Replaceable Carbon Steel	Replaceable 316 Stainless Steel
4	Disc	Replaceable 316 Stainless Steel	Replaceable 316 Stainless Steel
5	O-Ring	Seat Seal: Fluorocarbon	Seat Seal: Fluorocarbon
6	O-Ring	Assembly Seal: Buna-N	Assembly Seal: Fluorocarbon
7	O-Ring	Body Seal: Buna-N	Body Seal: Fluorocarbon
8	Bolts	ASTM A193 B7M	ASTM A193 B7M



Dimensional Data

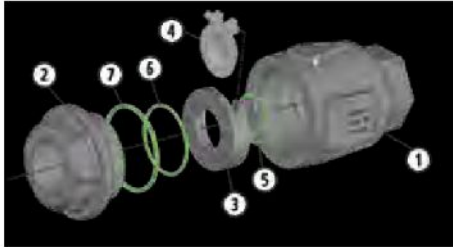
SIZE	CATALOG NUMBER		PORT	D	L	LBS.
	CARBON STEEL SEAT	STAINLESS STEEL SEAT				
2	2R-C03-SE	2R-C03S-SE	1.5	4.87	5.37	11.7

Threaded \ Grooved End



Series C Carbon Steel

- Swing Check Valve
- To 3000 PSI WP
- 1" Through 2"
- Threaded Body Construction

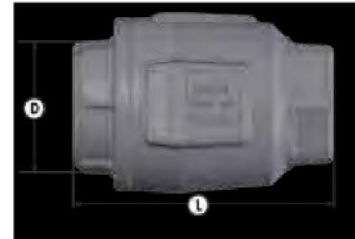


Material Description

ITEM	PART NAME	CARBON STEEL SEAT	STAINLESS STEEL SEAT
1	Body	ASTM A105 Carbon Steel	AISI 1018 Carbon Steel
2	Adapter	ASTM A105 Carbon Steel	AISI 1018 Carbon Steel
3	Seat	Replaceable Carbon Steel	Replaceable 316 Stainless Steel
4	Disc	Replaceable 316 Stainless Steel	Replaceable 316 Stainless Steel
5	O-Ring	Seat Seal: Fluorocarbon	Seat Seal: Fluorocarbon
6	O-Ring	Assembly Seal: Buna-N	Assembly Seal: Fluorocarbon
7	O-Ring	Body Seal: Buna-N	Body Seal: Fluorocarbon

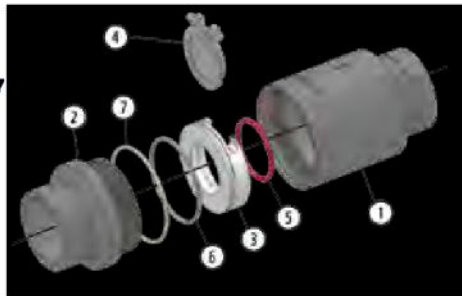
Dimensional Data

SIZE	CATALOG NUMBER		PORT	WP	D	L	LBS.
	CARBON STEEL SEAT	STAINLESS STEEL SEAT					
1	1F-C83-SE	1F-C83S-SE	1	1500	2.75	4.25	4.2
1	1F-C03-SE	1F-C03S-SE	1	3000	2.75	4.25	4.2
2	2F-C43-SE	2F-C43S-SE	2	1000	4	5.75	10.5



- Replaceable Seat Disc Cartridge
- Seal Located in Seat, Thus Protected From Flow
- NACE Standard
- 316 Stainless Steel Disc Standard

- Swing Check Valve
- 1000 PSI WP
- 2" Through 3"
- Threaded Body Construction



Dimensional Data

SIZE	CATALOG NUMBER		PORT	D	L	LBS.
	CARBON STEEL SEAT	STAINLESS STEEL SEAT				
2	2R-C43-GE	2R-C43S-GE	1.5	3.12	5.87	5.3
3	3R-C43-GE	3R-C43S-GE	2	4	6.50	9.8